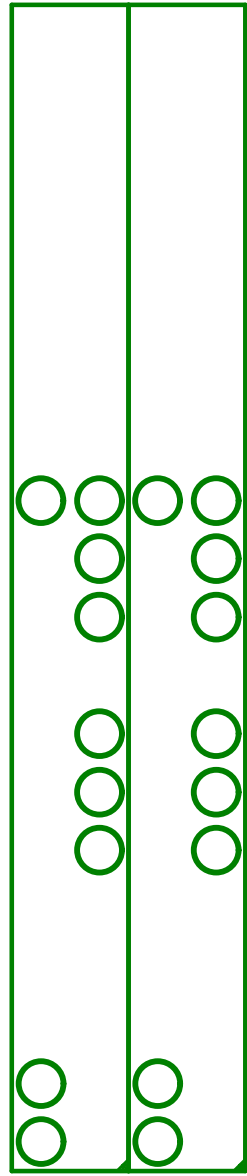


2210 (mil)

2560 (mil)

S2
RESET

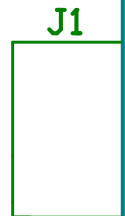
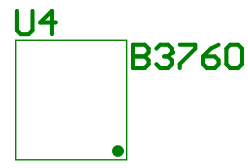
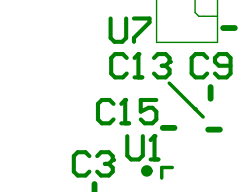


U5
C30_ R12 R11



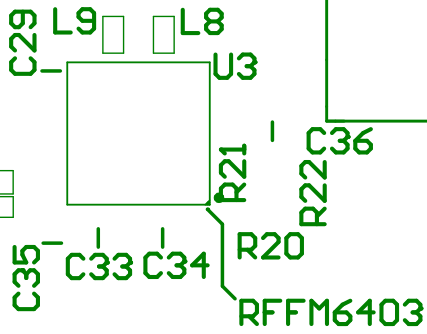
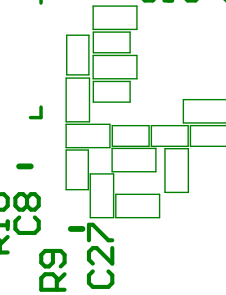
This
Side
Up ^

40MHz



U1
C3 C4 C5
CC1125

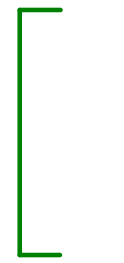
R1 R2 C7 R10 C8 R9 C27



R15
LP5912 U2
C1 C2



C32 LT1587-3.6



U6

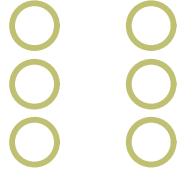
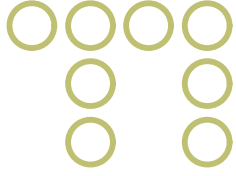
Open
Hardware

LinkBerry 1.0

OCT 2018

Git: https://github.com/MonkHeiios

CC DEBUGGER OR RASPBERRY PI
USE ONE SPI MASTER AT A TIME



PI GP10	GP17 #	RF GP10	FEM* CTRL
GP22	GP27 #	GP0	TR
		GP2	BYP
		GP3	--

TR	MODE	BYP	MODE
1	TX	1	PA\NA DISABLE
0	RX	0	PA\NA ENABLE

INPUT TO PI
* FEM: FRONT END MODULE

VIA SPI
CONTROL PINS
CONFIGURE FEM

433MHz

